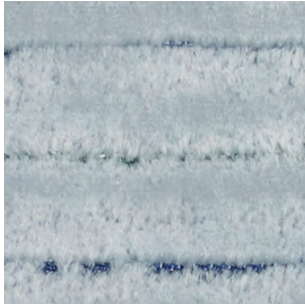
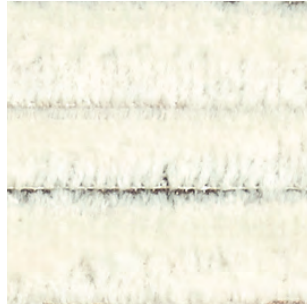


Fez Stripe

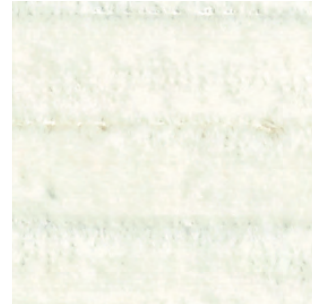
SAHCO



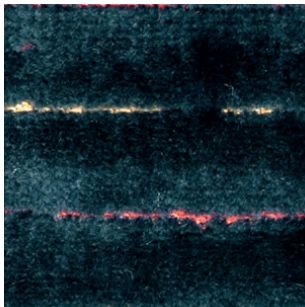
005



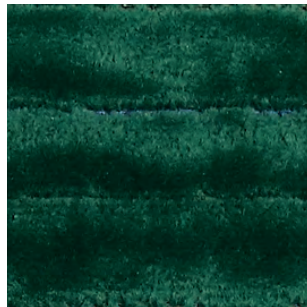
002



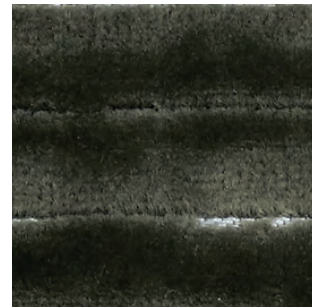
001



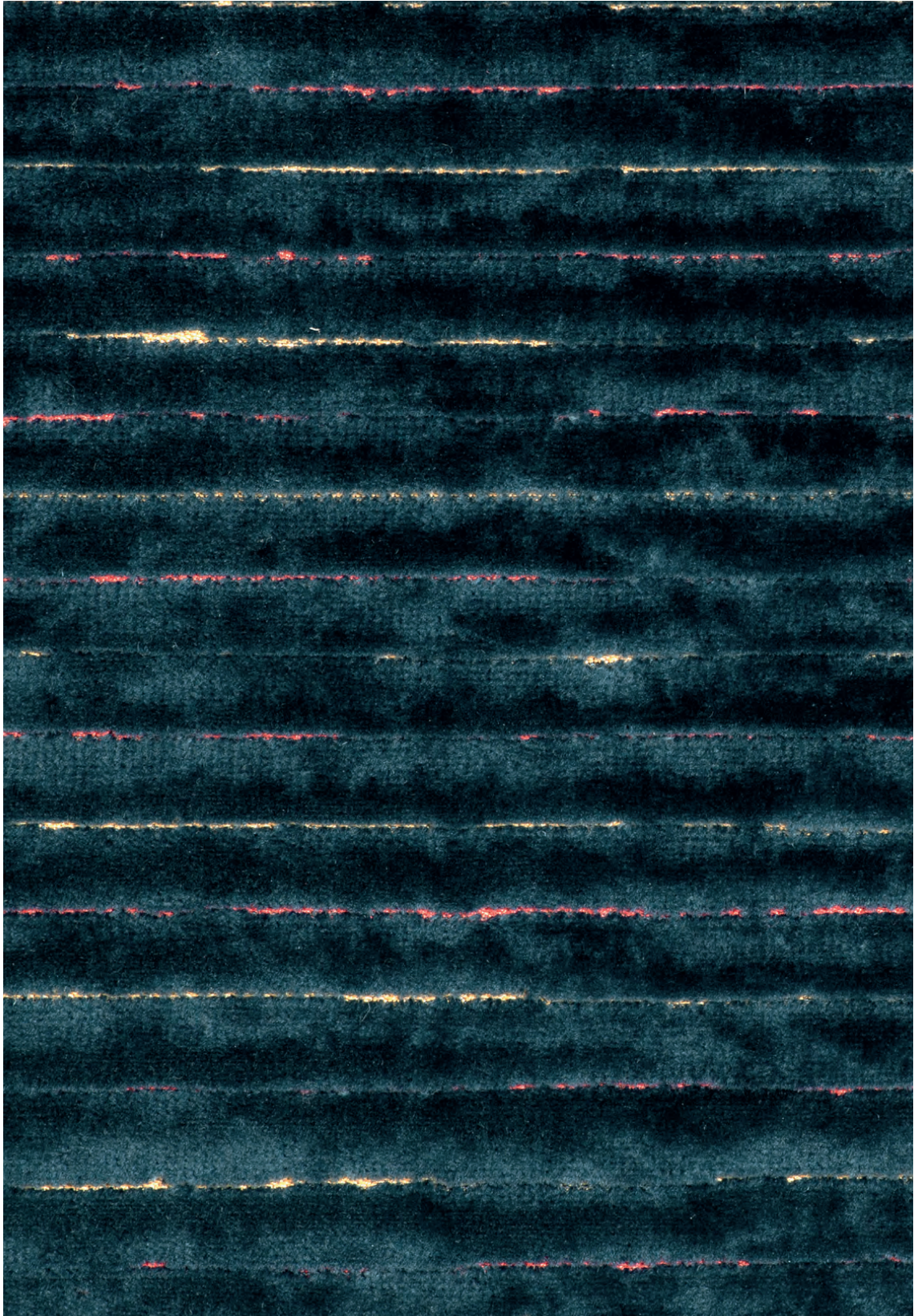
006



004



003



006

Fez Stripe

Vincent Van Duysen

DK**Anvendelse** Polstring**Beskrivelse** 70% bomuld, 30% Polyester.Bredde 140 cm / 55 in. Rapport 70 cm / 28 in.
Vægt 570 g/lin.m**Testning** Lysægted 5-6 (ISO 1-8). Pilling 5 (ISO 1-5). Slidstyrke: 65.000 Martindale.

Krympning ca. 2%. Flammesikring BS 5852 Crib 5 med behandling. BS 5852 part 1, ig. s. o. EN 1021-1

Vedligeholdelse Se ISO symboler**UK/US****Application** Upholstery**Description** 70% Cotton, 30% Polyester.Width 140 cm / 55 in. Repeat 70 cm / 28 in.
Weight 570 g/lm 20 oz/sq**Tests** Lightfastness 5-6 (ISO 1-8). Pilling 5 (ISO 1-5). Durability 65.000 Martindale.

Shrinkage ca. 2%. Flame resistance BS 5852 Crib 5 with treatment. BS 5852 part 1, ig. s. o. EN 1021-1

Care Please see the ISO symbols**DE****Anwendungsbereich** Bezugstoff**Beschreibung** 70% Baumwolle, 30% Polyester.Breite 140 cm / 55 in. Rapport 70 cm / 28 in.
Gewicht 570 g/lfd. Meter**Testergebnisse** Lichtechtheit 5-6 (ISO 1-8). Pilling 5 (ISO 1-5). Scheuertouren 65.000 Martindale. Einlaufquote ca. 2%. Flammenschutz BS 5852 Crib 5 mit Behandlung. BS 5852 part 1, ig. s. o. EN 1021-1**Pflege** Siehe ISO Pflegesymbole**NL****Toepassing** Bekleding stof**Omschrijving** 70% katoen, 30% polyester.Hoogte 140 cm / 55 in. Rapport 70 cm / 28 in.
Gewicht 1.010 gr/str.m**Testgegevens** Lichtechtheid 5-6 (ISO 1-8).

Pilling 5 (ISO 1-5). Durability 65.000 Martindale. Washbelading ca. 2%.

Vlamvertragendheid BS 5852 Crib 5 met behandeling. BS 5852 part 1, ig. s. o. EN 1021-1

Onderhoud Zie de ISO symbolen**FR****Domaine d'utilisation** Tissu d'ameublement**Description** 70% coton, 30% polyester.Largeur 140 cm / 55 in. Répétition 70 cm / 28 in.
Poids 570 g/ml**Tests** Résistance à la lumière 5-6 (ISO 1-8).

Résistance au frottement 5 (ISO 1-5). Résistance à l'abrasion 65.000 Martindale. Rétrécissement env. 2%. Normes au feu BS 5852 Crib 5 avec traitement. BS 5852 part 1, ig. s. o. EN 1021-1

Entretien Voir les symboles ISO**IT****Destinazione d'uso** Tessuti per tappezzeria**Caratteristiche** 70% cotone, 30% poliestere.

Larghezza 140 cm / 55 in.

Ripetizione 70 cm / 28 in. Peso 570 gr/mtl.

Test Resistenza alla luce 5-6 (ISO 1-8). Pilling 5 (ISO 1-5). Abrasione 65.000 Martindale.

Restringimento circa 2%. Ignifugazione BS 5852 Crib 5 con il trattamento. BS 5852 part 1, ig. s. o. EN 1021-1

Manutenzione Per favore seguire simboli ISO**ES****Aplicación** Tapicería**Descripción** 70% algodón, 30% poliéster.

Anchura 140 cm / 55 in. Repetición 70 cm / 28 in. Peso 570 gr/ml

Pruebas Resistencia a la luz 5-6 (ISO 1-8).

Relleno 5 (ISO 1-5). Resistencia al desgaste 65.000 Martindale. Encogimiento aprox. 2%.

Resistencia al fuego BS 5852 Crib 5 con tratamiento. BS 5852 part 1, ig. s. o. EN 1021-1

Mantenimiento Consulte los símbolos ISO**JP****用途** 室内装飾用テキスタイル**組成** 綿 70%、ポリエステル 30%。幅140 cm / 55 in. インチ。リピート 70 cm / 28 インチ。
重さ 570 g/lin.m**テスト** 耐光性 5-6 (ISO 1-8)。ピリング5 (ISO 1-5)。耐久性 マーチンデール値 - 65,000。
収縮 約 2%。ケア 詳細は、ISO 認証をご覧ください**CN****应用** 软装面料**成分** 70% 棉, 30% 涤纶。幅宽 140 cm / 55 in.

Repeat 70 cm / 28 in. 克重 570 g/lin.m

耐磨指数 耐光性 5-6 (ISO 1-8)。抗起球度

5 (ISO 1-5)。耐久度 65,000 次马丁代尔摩擦实验 (Martindale)。缩水率 大约 2%

维护 请参阅ISO符号Contact and further information www.sahco.com

Quality and environmental system accreditation according to ISO 9001 and ISO 14001

Encouraging the use of suitable fibres. Durable and high quality. Hazardous substances restricted.